



# Gatehouse News

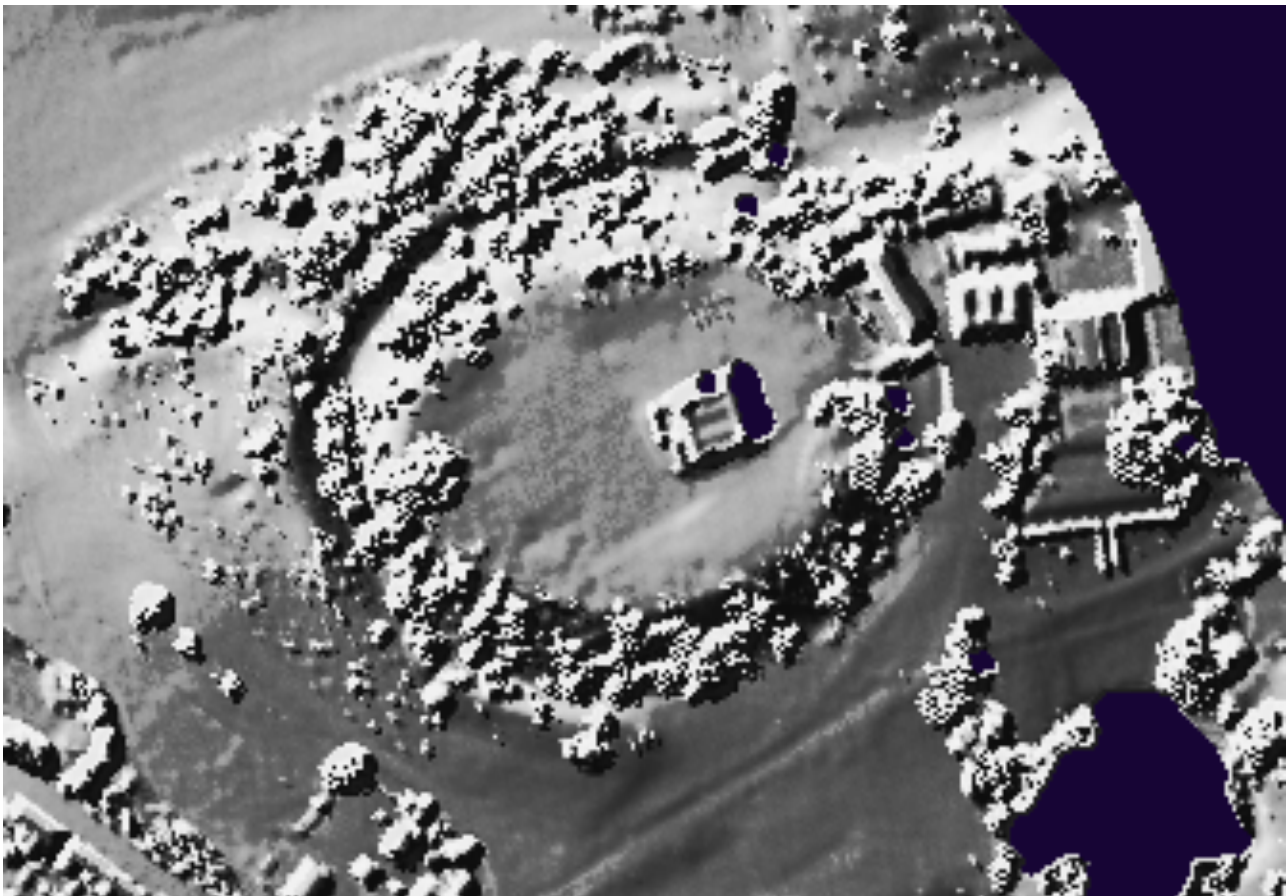
15 May 2016

**Developments of the Gatehouse Website. The comprehensive bibliography and gazetteer of the castles, fortifications and palaces of medieval England and Wales.**

I've now added a 'button' on the site records to view the site location on the houseprice.io 1m DSM lidar image (see [Newsletter 29](#)). As the coverage is far from

total results are pretty hit and miss and you can sometime click and apparently see a blank page but try zooming out. Although when you do get a result the images can be quite interesting and, sometimes, even useful the main function, I imagine, will be to give an idea if a site has some coverage and then the user will go and get the raw data and make some DSM and DTM images from that.

As promised in the [last newsletter](#) I've posted a list of sites I'll be visiting this summer. These planned visit are every other Wednesday and are all in Yorkshire. For [Castle Studies Group](#)<sup>1</sup> members there are a few sites that the Group will visit next year for the annual conference but most are not on that planned itinerary. The trip to Pontefract castle mentioned in the last newsletter was most useful.



*1m DSM Lidar of [Castle Hedingham](#). Massive, but often unnoticed, ringwork, fabulous great tower and hints of lost interior buildings noted by L.A. Majendie in 1869.*

---

<sup>1</sup> If you are not already a member do consider joining, even if you can't attend the annual conference. The annual journal is a great publication and the group provides support, in various ways, for the study and improved understanding of castles.



*Alexander Keirincx painting of Pontefract Castle (c. 1640) shows some unusual pointed buttresses on the front face of the castles gatehouse. Are these an artistic vertical representation of the horizontal form?*

Wessex Archaeology were onsite preparing for a [public activity day](#) and we had a long chat with some of their field archaeologists (but why would someone working on a castle not know who Bob Higham is?). Parts of the inner gatehouse have been uncovered and this show that gatehouse had triangular or pointed surrounding turrets, rather than the usual half round, or drum, turrets. Some discussion with Peter Burton has lead me to rewrite my comment on Swillington Tower (see [Pontefract Castle](#)).

The next visit I'm planning is to [Conisborough Castle](#) where I'm happy to have my opinions as to the form of the original roof, ceilings and upper works of the great tower challenged.

**See Visits 2016 for the full listing of planned visits.**

### NEW SITES

I obtained a small, but intensely densely written, booklet by Steve Sneyd called *The Devil's Logbooks Castles and Fortified Sites around South Yorkshire* (Hilltop Press 1995). I've started to go through this

and added some of the more clearly medieval sites in book, although these are, on the whole, 'homestead' moats outside the definition of fortified manor house used by Gatehouse.

- [Adwick Hall](#) - lost homestead moat.
- [Aldwark Hall](#) - loosely suggestive placename.
- [Balne Hall Moat](#) - cropmark of homestead moat.
- [Balne Yewtree House Moat](#) - lost homestead moat.
- [Balne Parkshaw Wood Moat](#) - scheduled moated site, possible of a park keeper.
- [Balne East Manor Farm Moat](#) - lost homestead moat.
- [Bilham Castle](#) - large 'summer house' of c. 1800 with local reputation as site of 'moated fortress'. Reject.
- [Birdsedge Castle Hill](#) - Interesting, possibly Bronze Age, pre-historic hill fort with a suggestion of a ringwork which can be rejected as medieval.
- [Blue Man's Bower](#) - small moat.

Philip Davis