



Gatehouse News

21 Sept 2014

Developments of the Gatehouse Website. The comprehensive bibliography and gazetteer of the castles, fortifications and palaces of medieval England and Wales.

Since the last *News* I been rather busy but not, I'm afraid, with much directly connected with Gatehouse. I've moved house and now have a better office to work from which will, I hope, aid the work on Gatehouse and I've been away to various sites and attended the international Château Gaillard conference in Germany so I hope I'm a little better informed on current castle studies ideas.

A change has been made to the web page designs in that the 'logo' (actually a reversed picture of a town gate in Lincoln) has been removed from the navigation menu. This is intended to make it easier to use the site on the smaller screens of tablets. I hope to do some further changes to reduce the amount of java script in the site, simplify design and add google translate to improve the international appeal and usefulness of Gatehouse. This may allow me to make pages that are better suited for phone based browsers but I don't intend to sacrifice any functionality to support phones. However please remember I'm not a web designer so don't expect too much from the web design. I hope most people use Gatehouse for its content and my web design concerns are to make access to that content as easy and predictable as possible within my limitations.

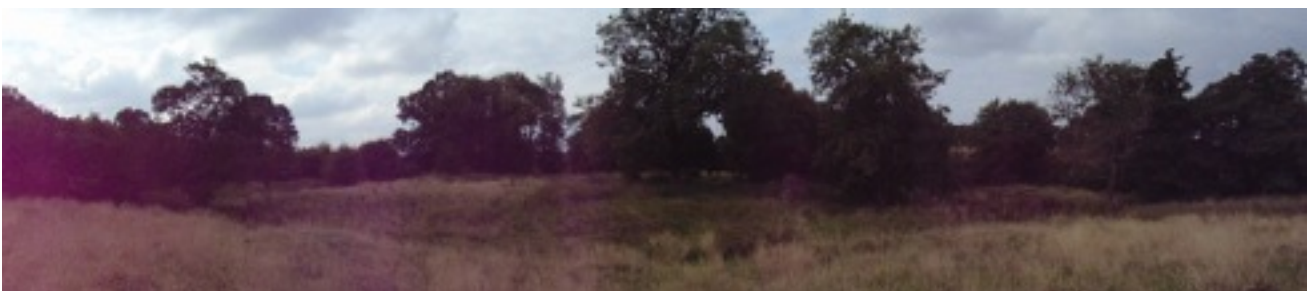
In the last *News* I mentioned I'd changed the index pages of the historic counties of Wales so that reject sites are listed after the more certain sites. I've now done this for the English counties.

Dr Gillian Eadie has now published her [second bibliography for the Castle Studies Group](#). The relevant details I'd otherwise missed have been added to Gatehouse.

One short paper I hadn't been aware of before reading Gillian's bibliography was an essay by the extraordinary prolific castle studies writer Derek Renn on 'The other towers of London' (in *Hidden histories and records of antiquity 2014* London and Middlesex Archaeology Society Special Paper 17). I'd written something on these myself a few years ago (2010-11 *Castle Studies Group Journal* 24) and Dr Charles Coulson had told me Derek had done some work on the subject. Derek's paper was based on an address he gave in 1991 but has now got into print.

FILLONGLEY

One site I have visited recently is [Castle Yard](#) at Fillongley in Warwickshire. This is scheduled as a ringwork and suggested as being occupied by the Hastings family *tempus* Henry I. It is probably the site of a house licenced in 1301 of which some small amounts of masonry remain. Another ringwork and bailey, called [Castle Hills](#) (scheduled as a motte and bailey) lies 1km to the North East. It is fairly rare for two castles to contemporaneously exist in the same village, although the parish of Fillongley contained several manors. On examination Castle Yard does not really seem to be a ringwork but rather to be an irregular moated site, mainly made out of unmodified natural streams,





although the side facing the village and on the line of approach appears to be a canalised stream looking like a straight arm of a moat about 5m wide, possible with some footings for a bridge.

Is the story here really one of two 12th century timber castles in one village or of a 12th century site abandoned at the beginning of the 14th century in favour of a site made to look like a fashionable moated house?

NEW SITES ADDED

From the ongoing work (seemingly endless) on Northumberland.

- [Wooley Farm Bastle complex - West Range](#)
- [Wooley Farm Bastle complex - North Range](#)
 - The [Wooley Farm complex](#) of bastles had been previously listed but in my new policy of separately listing all bastles is now three records.
- [West Wharmley Cottage Bastle](#)
 - West Wharmley now two sites.
- [Hollinhead](#)
 - A bastle identified by the Tasset Archive Group although I'm a bit dubious about this.
- [Craigshield](#)
 - A possible bastle site in the Northumberland HER
- [Housesteads South-east Bastle](#)
 - The Housestead bastles now as two sites
- [The Hagg, Allendale](#)
 - A pretty certain bastle in the NHER
- [Highfield farm bastle, Tasset](#)
- [Highfield ruined bastle 2, Tasset](#)

- The [Highfield Farm](#) complex of bastles now as three sites.
- [Lambley Farm Bastle](#)
 - bastle in NHER
- [Haltwhistle Musgrove Tower](#)
 - This is a tower recorded in the 1415 survey which Gatehouse had previously identified with [Haltwhistle Old Tower](#). However that, now lost, tower (really a superior bastle and demolished in 1963 despite being a scheduled monument!) dated from the early C17 and is unlikely even as the site of the 1415 tower.
- [High Eals Bastle II, Greystead](#)
 - The second bastle at High Eals now separately listed.

Sites suggested by [Matthew Emmott](#)

- [Castle Dairy, Kendal](#)
 - Some of the features of this C14 house have been suggested as 'defensive', by Dan Elsworth, although I can't really see this.
- [Burton in Kendal Church of St James](#)
 - A church tower suggested as a 'pele' but pretty soundly rejected as such.

A couple of lost 'british keeps' identified in 1804 by Edward King in *Munimenta antiqua* can be rejected.

- [Tower near Biddeford](#)
- [Tower near Lyme](#)

From Derek Renn's London Towers paper.

- [St Mary-le-Bow Cheapside Church](#)
 - Dubious as a fortified church although recorded by Stow as being 'fortified in 1196.
- [House of Robert de Kelsey, Basing Lane, London](#)
- [The Steelyard](#)
- [Fishmongers Hall](#)
 - Three warehouse/residential complexes probably defensible and equipped with decorative crenellations and towers.

Philip Charles Davis